

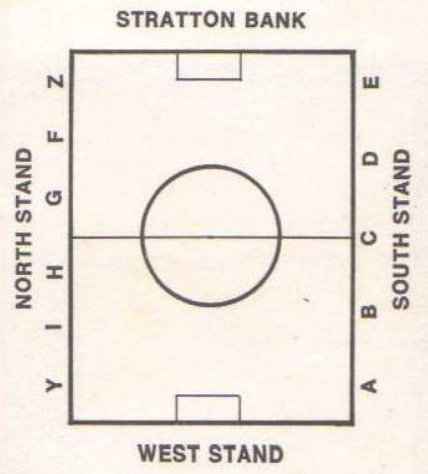


# SWINDON TOWN FOOTBALL CLUB



**official programme 1/-**

## KEY TO GROUND

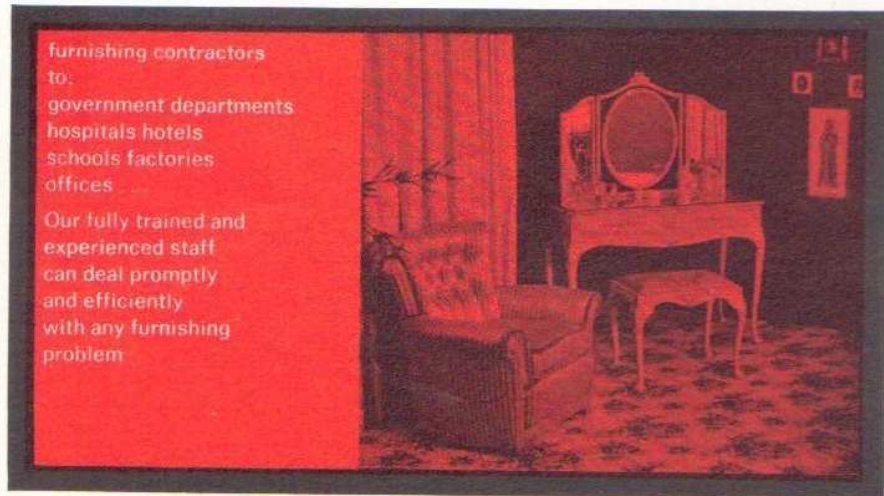


- PROGRAMME CONTENTS**
- News and Views
  - Our Visitors
  - League Table
  - Teams
  - Supporters Club Notes
  - Club Information



# furniture & furnishings

of charm and distinction . . .  
carpets floor coverings loose  
covers curtains skilled workshop  
repair service . . .

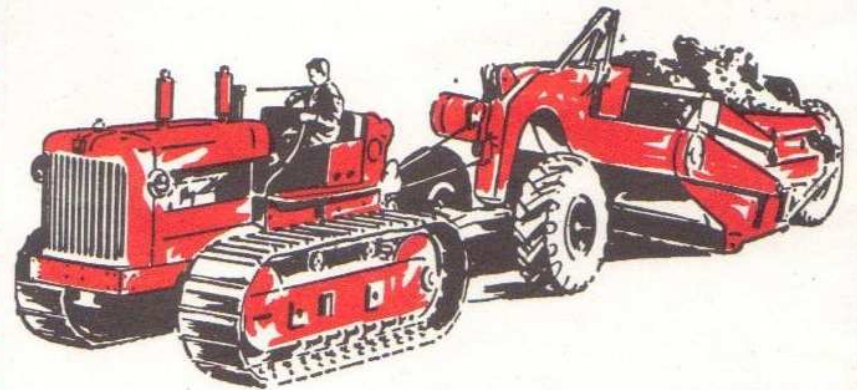


**mills+merricks**  
**ltd** established over 65 years  
16/17 Bridge Street Swindon phone 5365/6

**H. HIBBERD LTD.**

40 NEWPORT STREET, SWINDON

*Plant Hire Contractors*



**FOR YOUR EARTH-MOVING EQUIPMENT**

**TELEPHONE SWINDON 6125**

## SWINDON TOWN FOOTBALL COMPANY LIMITED

Registered Office: COUNTY GROUND, SWINDON

Mr. W. J. CASTLE (President)                      Mr. J. DAVIES (Vice-President)

DIRECTORS:

Mr. H. E. LANE (Chairman)                      Mr. R. FRICKER (Vice-Chairman)

Messrs. F. L. COLLINGS, A. W. DONE, M. EARLE, C. J. GREEN, F. PLYER,  
H. WILLIAMS, K. H. WILMER and Dr. J. NICHOLAS

Manager: D. WILLIAMS                              Secretary: R. A. MORSE

VOL. 19

MONDAY, 5th MAY, 1969

No. 32

MONDAY, 5th MAY, 1969

DIVISION III

**SWINDON TOWN**

V.

**BARROW**

**Kick-off 7.30 p.m.**

REFEREE:

MR. K. MARKHAM (Woking)

LINESMEN:

Red Flag—MR. L. B. HARRIS (Chard)

Yellow Flag—MR. D. W. JONES (Swansea)

## NEWS and VIEWS

At the time of writing we still need one point for promotion, but that seems almost assured with a game at Rotherham and tonight's match — although one cannot be absolutely sure until points have been gained.

This surely has been our greatest season ever, the like of which we shall possibly never experience again. The great run in the League Cup, with its wonderful climax, a win against Arsenal at Wembley. The likelihood (we hope it is now definite) of the promotion. The success of Swindon Boys team in reaching the Final of the English Schools' Shield Competition, with every chance of winning the Trophy. Even we ourselves have gained some small honour. Our humble efforts with the programme have been recognised in that Swindon is placed second in the Division III order of merit for programmes.

Another factor has been the outstanding figures for attendance at home games, probably a record for the Club.

Now to the people who have in no small way helped towards the smooth running of the Club. In these days we hear much of the (dare I use that much overworked word?) "pressures".

Think for a moment of the work involved, and the "pressures" imposed by the vast crowds on the Chief Steward, Mr. Bill Harris, and the gatemen. Life for them has been very hectic, especially as most of our spectators come to the game within the thirty minutes prior to kick-off time. How did they feel in their little tin emporiums, with thousands anxious to gain admittance? A thought too for our Stewards, their task has not been easy, especially the gentleman on the Official

NEWS & VIEWS—continued

Gate — Gilbert (George to many). Often has he faced the howling mob wanting to get in the ground.

A word of thanks to those who welcome certain groups of people — the Press, etc. To the ladies in the tea-room, who greet the officials with a smile and a cup of tea, so enhancing the name of Swindon Town, and its hospitality.

So to St. John's Ambulance Brigade (men and women). This season they have done a tremendous job coping with the many cases, due to vast crowds and excitement. Their services are rendered freely and willingly. Our grateful thanks to them indeed.

A word of thanks, too, to the police. Whilst it is true we have won three awards for crowd behaviour, the police have frequently had to face difficult situations, also crowd control and maximum attendance.

Finally, the Directors. Perhaps I ought not to mention them, but success, probably more than failure, brings many problems. Long hours have been (and will continue to be) spent in resolving those problems.

There are many more people in the background who work for the Club. If we have missed them, we are very sorry, but we could of course list many, many more.

Now to this evening's encounter. I wonder how many remember the corresponding game last season. (One thing we do hope for, that is we do not get a repetition of that match this evening.) Mulholland headed a goal for the visitors in the sixth minute. From then onwards Swindon completely monopolised the whole game, but try how they could, goalkeeper Else saved shots from all angles and was not beaten once. It was an outstanding game on his part.

NEWS & VIEWS—continued

Swindon: Jones; Thomas, Trollope; Harland, Giles, Butler; Heath, Penman, Terry, Smart, Rogers.

Barrow: Else; Mallon, Edwards; Hartland, Harrison, Appleton, McCarthy, McGarry, McAdams, Mulholland, Field.

Date played: 26th September, 1967.

Attendance: 13,567.

This season we visited Barrow on Saturday, 15th February, 1969, and won by three goals to nil, with goals by Smart, Jones and Noble. The team was the same as played in the Cup Final, except Jones was at centre-forward instead of Smith.

Our visitors tonight are enjoying quite a good season — their second in Division III. Barrow joined the newly-formed Northern Section of Division III in 1921, and they had to wait until season 1966-67 before they won anything. That year, along with Southport (who were in the same boat) they gained promotion with a club record of 59 points. They also achieved something which will be difficult to beat — they gained the most away wins in the Football League. Three teams reached double figures, and Barrow gained 12, two more than Wolves and Stockport.

Geographically isolated and in a Rugby League stronghold, Barrow have found the means, urge and patience to continue a hand-to-mouth existence, in spite of having to seek re-election several times. We admire the pride and faith which has kept the Club going. Remember we ourselves had to seek re-election in two successive seasons — 1955/56 and 1956/57. Those were the days when we were really up against it, but it seems a far cry from Wembley and promotion, yet those days were only eleven seasons ago. Everything is swinging now, but conditions can change so quickly.

# WILTS CLEANING SUPPLIES SERVICE

30 FLORENCE STREET  
SWINDON  
WILTSHIRE  
Telephone 21012

Suppliers of all types of cleaning, and ancillary materials, to Hospitals, Local Authorities, Schools, Factories, Shops, Hotels, Clubs, Churches, etc. Special prices and contract prices arranged and a prompt and free delivery within 30 miles of Swindon.

Agents for: Progress Floor Treatments, Polishes etc. S. C. Johnsons Polishes etc. Kimberly Clark Paper Products. Deb Chemicals, Swarfega, Jizer, Janitol, Verve, Lanimol, Tot etc. Geerpres Mopping Equipment, Window Squeegees etc. Floor Scrubbing and Polishing Machines Demonstrated. Electric Light Bulbs, Fluorescent Tubes and Fittings etc.

We supply everything you need for keeping your premises clean at the lowest cost. **Plus** a free advisory service on all aspects of cleaning problems, this is backed by over 25 years experience in the industrial cleaning field. So, if you have problems, consult us.

Comprehensive range of goods kept, Steel Wool, Floor Pads, Nylon Pads, Brillo Pads, Plastic and Galvanised Buckets, Dustpans, Boiler Fillers, Yarn and Cotton Mops, Broom Handles, Minit Mops, Addis Mops, Tea Towels, Chamois Leathers, Scrim, Disinfectants, Channel Blocks, Toilet Rings, Scouring Powder, Liquid Soap, Bleach, Dusters, Stockinette Wipers, Floorcloths, Toilet Soap, Carbolic Soap, Toilet Cleaners, Toilet Paper, Brasso, Silvo, Duraglit, Windowlene, Air Freshener and Fly Killers, Vapona etc.

**MANY OTHER ITEMS STOCKED RING SWINDON 21012**

## OUR VISITORS



### BARROW FOOTBALL CLUB

Pen Pictures 1968/69

BARROW

#### **FRED ELSE (Goalkeeper)**

Playing as well and confidently as he did in his lengthy spells of service with Blackburn Rovers and Preston North End. Born in Goldbourne he joined Barrow in the Summer of 1966. A man who is a credit to the game. Missed only six games last season.

#### **PETER BARTON (Goalkeeper)**

A local boy who is an apprentice and joined the club from school. An England Schools trialist, he has the ideal build for the position and looks like a good prospect.

#### **JAMES MALLON (Full Back)**

Has played consistently well since joining the club from Greenock Morton in September, 1965. Formerly a forward with Oldham Athletic he has missed very few games for Barrow. Born Glasgow.

#### **MALCOLM EDWARDS (Full Back or Half Back)**

One of the best free transfer signings ever made by the club. Now in his fifth season and playing as hard as ever. A former Bolton, Chester and Tranmere player. Played 46 league and cup games last season. Born Wrexham.

#### **PETER BEBBINGTON (Full Back or Half Back)**

Signed for Barrow in November, 1967 from Leicester City, his only other league club, and quickly established himself in the First Eleven at both left half and full back. A good young prospect who could return to First Division football soon. Born Oswestry.

#### **DON DAVISON (Full Back or Half Back)**

A young player who started his career with Newcastle United before coming to Holker Street in September, 1965. He shows distinct promise and is very keen to progress.



## W. J. CASTLE

Office and Bakery  
4 and 5 MARKET STREET  
SWINDON  
Telephone 22017

Specialists—

BIRTHDAY CAKES - WEDDING CAKES  
DAIRY CREAM - PASTRIES  
BUNS - ROLLS - SPONGES

## Dobell Shearman & Co. Ltd.

High Street, Swindon

Telephone: 4961

FANCY AND COMMERCIAL STATIONERS

TYPEWRITERS & OFFICE EQUIPMENT

Greetings Cards for all Occasions  
from Leading Art Publishers

## Heating Services (C.G.H.) Ltd.

HEATING, PLUMBING & VENTILATING  
ENGINEERS

INSTALLATION & REPAIRS

24 HOUR MAINTENANCE SERVICE

28 BUCKINGHAM RD.

Tel: SWINDON 27630

### OUR VISITORS—continued

#### BRIAN ARROWSMITH (Centre Half or Full Back)

Not big for a Centre Half—5ft. 9ins.—but don't let that fool you. He has blotted out many notable No. 9's including Johnnie Byrne and Ron Davies. A local boy who was signed in 1961. A very capable cricketer and golfer.

#### ERIC HARRISON (Wing Half Back)

A hard defensive player signed from Hartlepoons United in 1966 and played in 53 first team games last season in League and Cup. Born Hebden Bridge he played previously with Halifax Town.

#### ROY ELLISON (Wing Half Back or Inside Forward)

A teenager signed from Newcastle United in February, 1968 for a small fee. An enthusiastic boy who is determined to progress in the game. He had made ten first team appearances in 1967-68 and will be challenging for a regular place in the team. Born Newbiggin-by-the-Sea.

#### MIKE KNOX (Utility Defender)

A regular member of the Reserve side for three seasons and a boy who is dedicated to the game. Signed on part-time terms early last season, he is a twin brother of forward Bobbie. Born at Ulverston.

#### ROY McCARTHY (Outside Right)

A very fast raider and a player who has improved tremendously since coming to Barrow from Barnsley in 1964. He is now in his fifth season with the Club and has been a regular. He scored 7 goals in his 33 appearances last season. Born Barnsley.

#### HOWARD RILEY (Outside Right)

A close season signing. Played in two F.A. Cup finals for Leicester before moving to Walsall. He has recently returned from America where he has played for Atlanta. A player with undoubted ability and experience.

#### JIM MULHOLLAND (Centre or Inside Forward)

One of the best forwards Barrow have had in years. A very good ball player who knows where the goal lies. Joined Barrow from Morton in July, 1965, having previously been in English football with Chelsea. Scored 12 goals in 44 matches last season. Born Glasgow.

OUR VISITORS—continued

**JIM MULVANEY (Inside Forward)**

A native of Sunderland, he was signed from Hartlepoons United in November, 1967 and scored 8 goals in his 19 appearances last season. Brother of the Blackburn Rovers player. He is a very useful player especially around the goal area.

**GEORGE McLEAN (Centre Forward)**

Netted 16 goals for Workington Reds last season and was signed to provide height and strength to the forward line. A player of experience with Norwich City, Grimsby Town and Exeter and has always been amongst the goals. Born Paisley.

**BILL McADAMS (Centre or Inside Forward)**

A former Irish International who has worked hard to regain his match fitness after a serious operation. He played a big part in Barrow's promotion in 1966-67. Formerly with Manchester City, Leeds United and Queens Park Rangers. Born Belfast.

**BOBBIE KNOX (Centre Forward)**

He has developed through the Club's junior sides and is now in his fourth season as a part-time professional. A six footer and twin brother of Mike, he is such a useful player and can even play in goal in an emergency. He netted five times in his ten first team matches last term. Born Ulverston.

**DAVID STORF (Outside Left)**

The record Barrow transfer fee to Rochdale in July, 1967, has proved well worth while. Without doubt one of the few good class outside lefts in the League. Top goalscorer with 16 League goals last season including a hat-trick. Born Sheffield he started his career with Wednesday.

**MICK HARTLAND (Inside Forward or Half Back)**

Proved to be a useful linkman and a player of exceptional football craft when on top form. Signed on a 'free' from Oxford United he is now in his fourth season with Barrow. Still young enough to progress in the game. Played in 38 League games last season for 8 goals. Born Dunfermline.

# BRETTS

PET AND GARDEN SUPPLIES

32-33 Commercial Rd.  
Swindon

6 Cromwell St.  
Swindon

At Your Service

**A. E. LUDLOW LTD.**

Wholesale Fruit and Potato Merchant  
**COLBOURNE STREET, SWINDON, WILTSHIRE**  
Telephone Swindon 3583

We deliver Fresh Fruit, Vegetables and Potatoes daily  
**WHOLESALE ONLY**

FOR ALL YOUR ANGLING NEEDS  
CONSULT

**FRANK WOODWARD**

Swindon's Fishing Tackle Specialist

**25 HAVELOCK ST., SWINDON**

PHONE 3879

For Paints of Good Quality

**H. S. HODGES & SONS**

(SWINDON) LTD.

**CRICKLADE RD., SWINDON**

PHONE 22422

Dulux, Brolac, Valspar, Wallcharm,  
etc.

**SOUTHERN LAUNDRY  
CO. LTD.**

Launderers and Dry Cleaners

**HAYDON ST. - SWINDON**

TELEPHONE 4161

The Advertisers in this  
programme have supported  
the Club. Will you help us  
reciprocate by supporting  
them whenever possible?

## W. J. SELWOOD

Telephone Swindon 5884

### Saddlery

General Leather Goods Manufactured  
and Repaired to Your Individual  
Requirements

103 BROAD STREET  
SWINDON, WILTSHIRE

Always at your service

## L. BIBBY

For all Types—Rags, Iron and Metal,  
etc. Spot Cash Paid. Please Tel. 2101  
and our van will call.

THE PADDOCK, ERMIN STREET  
STRATTON ST. MARGARET

# COWLEY BROS (WROUGHTON) LTD

## *Building Contractors*

28 NEWPORT STREET  
SWINDON

Telephone 6870

## WISES CATERING SERVICE

(Reg. Wise)

Our Caterer for the past 20 seasons  
**Guarantees**  
A GOOD CUP OF TEA AT THE  
COUNTY GROUND

A full range of Sweets and Cigarettes  
at any of our five kiosks on your  
way in. ENJOY YOURSELF

## Warnes Rentals—

To be sure!

51 Commercial Road,  
SWINDON

Telephone 6486

## THE MAN IN THE MIDDLE— MR. K. MARKHAM

### Education:

Chiswick Grammar School and Royal Military Academy,  
Sandhurst.

### H.M. Forces:

Commissioned into the Essex Regiment and served as an  
Infantry Platoon Commander in the Middle East and  
Palestine.

### Commercial Career:

A Fellow of the Institute of Chartered Accountants, a  
Director of The Rio Tinto Finance and Exploration Com-  
pany. Also Head of the forward strategic financial planning of  
The Rio Tinto Zinc Corporation, an international mining  
company with assets of some £500,000,000.

### Sporting Career:

Originally played for Dulwich Hamlet, a Southern  
Amateur Club. Career ended after breaking both legs, a  
shoulder blade and a wrist, and took up refereeing at the age  
of 23. Refereeing for 17 years, 13 of which have been as  
a Class I official.

### Family:

Married, with one daughter aged 10, a Cairn terrier and a  
large garden to maintain.



**Your own MOVIE FILM of the  
League Cup Final  
SWINDON TOWN v. ARSENAL**

**All the highlights of this great match recaptured  
for you on film (Black and White)**

	Standard 8	Super 8
200 ft. (10 minutes)	£4 4 0	£4 10 0
400 ft. (20 minutes)	£7 10 0	£8 10 0
400 ft. (20 minutes) Sound	£13 10 0	£14 10 0

All running times and lengths are approximate

**ORDER YOUR COPY NOW**

Fill in the coupon below and post, together with  
your remittance, to:

**The Secretary, Swindon Town F.C.,  
County Ground, Swindon, Wilts.**

Please supply ..... copy(ies) of the League Cup Final game

—Swindon Town v. Arsenal as follows:

Standard 8/Super 8	}	delete as necessary
200 ft./400 ft.		
Silent/Sound		

NAME (Block Letters) .....

ADDRESS .....

Remittance enclosed for £.....

## **The Borough Stationers**

**6 Commercial Road Swindon**

For all office stationery

Backed by the resources of the  
Borough Press

The most comprehensive stock in the District

## **LUNN'S**

**FISH BAR and RESTAURANT**

**COMMERCIAL ROAD, SWINDON**

Telephone 3203

**Complete meals served all day**

Call before the match and on your way home

## **WILSONS (SWINDON) LTD.**

**BUILDERS OF MODERN ATTRACTIVE  
HOUSES AND BUNGALOWS**

Developments at:

Upper and Lower Stratton — Blunsdon and Highworth

**Head Office:**

**90/91 COMMERCIAL ROAD - SWINDON**

Telephone Swindon 6361/3

August 13	Torquay United (League Cup)	14,702	(H)	2-1
17	Stockport County	13,350	(H)	1-0
24	Hartlepool	5,732	(A)	0-0
27	Reading	16,765	(H)	0-0
31	Plymouth Argyle	12,302	(H)	3-0
September 4	Bradford City (League Cup)	7,806	(A)	1-1
7	Watford	8,709	(A)	0-0
1	Bradford City (League Cup Replay)	12,214	(H)	4-3
14	Walsall	10,593	(H)	1-0
18	Bournemouth & Boscombe Athletic	11,920	(A)	0-2
21	Bristol Rovers	10,364	(A)	1-2
24	Blackburn Rovers (League Cup)	15,402	(H)	1-0
28	Shrewsbury Town	12,087	(H)	3-0
October 5	Orient	12,450	(H)	1-0
9	Reading	17,450	(A)	1-0
12	Brighton & Hove Albion	7,547	(A)	3-1
15	Coventry City (League Cup)	23,810	(A)	2-2
19	Torquay United	15,152	(H)	2-1
21	Coventry City (League Cup Replay)	23,828	(H)	3-0
26	Oldham Athletic	4,238	(A)	3-2
30	Derby County (League Cup)	35,104	(A)	0-0
November 2	Southport	18,910	(H)	5-1
5	Derby County (League Cup Replay)	26,449	(H)	1-0
9	Luton Town	17,250	(A)	0-2
16	(1) F.A. Cup Canterbury	14,387	(A)	1-0
20	Burnley (League Cup Semi-Final)	25,755	(A)	2-1
23	Mansfield Town	5,380	(A)	0-2
26	Northampton Town	6,827	(A)	6-2
December 4	Burnley (League Cup Semi-Final)	28,000	(H)	1-2
7	(2) F.A. Cup Grantham	3,922	(A)	2-0
14	Brighton & Hove Albion	10,907	(H)	1-0
18	Burnley (League Cup Semi-Final)	20,000	(A)	3-2
21	Torquay United	8,327	(A)	1-0
25	Orient	7,101	(A)	0-1
January 4	(3) F.A. Cup Southend United	18,528	(H)	0-2
11	Southport	5,232	(A)	1-1
18	Luton Town	18,903	(H)	0-0
24	Tranmere Rovers	8,181	(A)	5-3
28	Oldham Athletic	21,316	(H)	5-1
February 1	Barnsley	13,983	(A)	1-1
4	Hartlepool United	18,921	(H)	1-1
15	Barrow	3,470	(A)	3-0
18	Tranmere Rovers	19,714	(H)	1-0
22	Rotherham United	23,515	(H)	1-0
25	Gillingham	17,489	(H)	1-0
March 1	Northampton Town	17,081	(H)	1-0
5	Gillingham	6,104	(A)	0-2
8	Stockport County	6,550	(A)	1-2
15	Arsenal (Wembley)	100,000	(A)	3-1
22	Plymouth Argyle		(A)	1-2
25	Barnsley	17,199	(H)	2-0
29	Watford	28,898	(H)	0-1
April 4	Crewe Alexandra	9,053	(A)	2-1
5	Shrewsbury Town		(A)	1-1
8	Bournemouth & Boscombe Athletic	22,465	(H)	3-0
12	Bristol Rovers	20,401	(H)	2-2
15	Crewe Alexandra	19,897	(H)	1-0
19	Walsall	10,654	(A)	2-0
22	Mansfield Town	21,045	(H)	1-0
May 2	Rotherham United		(A)	1-1
May 5	Barrow		(H)	

## Hatton's Newsagency

A. J. D. & N. J. Woodhouse

Newsagents :: Tobacconists  
Confectioners

Agents for Wessex School of  
Motoring

Booking Agents for Rimes Coaches

6 Regent Circus (near G.P.O.)

Telephone Swindon 22731

## HULFORD MOTORS LTD.

SELF DRIVE HIRE

Fleet of 1969/8 Fords  
Escorts De-Luxe - Cortinas De-Luxe  
Cortinas 1600 Estate (Bench Seat  
Column Change)—Zephyr V4s.

SHRIVENHAM ROAD  
(200 yards from Football Ground)  
Telephone 4934

Large Car Park Available

For High Class  
Central Heating, Plumbing  
Painting and Decorating  
Electrical Installations  
and Repairs

NORTH WILTS  
Sanitary and Heating  
Co. Ltd.

NEWPORT ST., SWINDON

Telephone 5373/4



Thinking of  
**BRISTOL**  
**BUILDING**  
A member of The

SWIN

Dow

Dawson (2)

Butler (4)

Smith (7) Penman (8)

Swindon's Colours  
Red Shirts, White Shorts

Swindon's 12th Man  
Heath

Storf (11) Mulvaney (10)

Hartland (6)

Davis (3)

**Mills & M**

Complete Home  
Furnishing

16-17 BRIDGE STREET, SWINDON

ple invest in the  
**L & WEST**  
**G SOCIETY**  
 ding Societies Association

Swindon Office  
 Bristol & West House  
 Regent Circus  
 Swindon  
 Tel: Swindon 6340

Shares and  
 Deposits in this  
 Society are  
 trustee investments

ON TOWN  
 sborough  
 Trollope (3)  
 ws (5) Harland (6)  
 es (9) Noble (10) Rogers (11)

IN TOUCH  
 ENING  
 RTISER  
 THE NEWS  
 These teams are subject  
 to alteration  
 Barrow's 12th Man

ean (9) Morrin (8) McCarthy (7)  
 smith (5) Harrison (4)  
 McDonald (2)  
 lse  
 RROW

**erricks Ltd.**

e Furnishers and  
 Contractors

NDON Tel: 5365/6

DINNERS  
 DANCES  
 LADIES' NIGHT  
 ANNUAL BALLS

*McIlroy's Ballroom*

COMMITTEE MEETINGS  
 RECEPTIONS  
 ENGAGEMENT PARTIES  
 PRIVATE LUNCHEONS

*McIlroy's Barbary Room*

MORNING COFFEE  
 LUNCHEON  
 AFTERNOON TEA  
 SILVER GRILL

*McIlroy's Restaurant*  
 (Fully Licenced)

**McILROY'S**

REGENT STREET  
 SWINDON 5294



THE ALCOHOL FUEL

**COATE GARAGE**

REPAIRS - OVERHAULS - WELDING  
 SERVICING - REBORING - TYRES

Props. E. V. & W. H. Mattick  
 Marlborough Road, Swindon

**DIVISION III**

(up to and including Friday, 2nd May, 1969)

**Top Three**

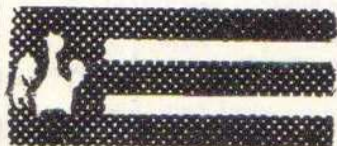
	P	W	D	L	F	A	P
Watford ... ..	45	27	10	8	73	31	64
<b>Swindon Town</b> ...	<b>45</b>	<b>26</b>	<b>10</b>	<b>9</b>	<b>69</b>	<b>35</b>	<b>62</b>
Luton Town ... ..	46	25	11	10	74	38	61

**Bottom Six**

Northampton Town	46	14	12	20	54	61	40
Gillingham ... ..	45	13	14	18	53	62	40
Shrewsbury Town	44	15	10	19	48	65	40
Hartlepool United	45	10	18	17	40	70	38
Oldham Athletic ...	46	13	9	24	50	83	35
Crewe Alexandra	45	13	8	24	52	76	34

Suppliers to the Swindon Team

MAY WE SUPPLY YOU?



**EARLE**

of Chippenham Limited

MAIN

**FORD**

DEALERS

**COCKLEBURY ROAD - CHIPPENHAM**

**Telephone 3255**

## **SUPPORTERS CLUB NOTES**

### **THE SUPPORTERS' CLUB FOOTBALL QUEEN COMPETITION AND DANCE**

**When?** Thursday, 26th June, 1969.

**Where?** In the Social Club.

All who wish to enter must be over 18 years of age. Full name, address and occupation **must** be given.

**Prizes:** The winner: **£15 cash. Two tickets for next season in the Directors' box**, by courtesy of the Chairman and Board of Directors. **2 seats with Rimes Coaches to every away match** to which coaches are run, by courtesy of Messrs. Rimes Coaches. The Football Queen Silver Cup, to be held for a year. Runners-up: 2nd **£10 cash**, 3rd **£5**. This is a choice of a Football Queen for Swindon Town Supporters. Regular football supporters will obviously have the edge over, shall we say, "professional" Beauty Queen competition entrants.

Applications (or nominations) to: The Hon. Gen. Secretary, S.T.F. Supporters' Club, 36 Nindum Road, Stratton St. Margaret.

The annual Dinner and Dance at McIlroy's Ballroom was undoubtedly the best ever, and the best attended. The Committee's thanks are gratefully extended to all who attended; to Stan Harland, who made the raffle a riotous affair, in his own inimitable manner; to all those who donated raffle prizes, and to W. D. & H. O. Wills Co. who so kindly donated cigarettes for all the tables at the dinner.

Supporters will also appreciate the decision of the Chairman of the Football Club and his Directors in allowing the silver football trophy awarded to you, the supporters, as the first ever

# GREAT WESTERN HOTEL

SWINDON

Telephone 22047

**Weddings, Parties, Business Lunches and  
Dinners a Speciality**

Excellent Food and Quick Service  
A must before or after the match

**VISIT OUR NEW STEAK BAR**

... not just concrete, but

# Premix

SWINDON AREA OFFICE c/o COLN GRAVEL CO. LTD.  
CLAYDON PIKE LECHLADE GLOS.

phone LECHLADE 461/2

Premix—an Amey company—serves 21 counties

## SUPPORTERS' CLUB NOTES—continued

“Crowd of the Season”, to be displayed in the Social Club. The award was presented to the Football Club and could have been retained in the Boardroom. How about making an effort next season and winning the second award so that the Boardroom can have one as well?

Your Committee has agreed that the Supporters' Club should make a presentation to all members of the playing staff, and the backroom boys, to mark the winning of the League Cup. This will probably take place just before the opening of next season, and will be announced in the Press in due course. We hope to provide something special to mark this unique occasion and have no doubt that you will do your part to make it a memorable function.

A reminder here to watch the local press for information on the Supporters' Club A.G.M. The probable date will be Monday, 30th June, in the Social Club.

A final “Thank You” to the players, staff and Board of Directors for the finest season in our parent Club's history. Greater things can happen in the future, but this depends on you. Without your support, through good and bad times, the main requirement of success — MONEY — will not be available. To this end, please help by increasing your support to the Supporters' Club Weekly Competition next and every season. We want more agents — get in touch NOW with our promoter, Mr. Phil Hart, at 65 Panehill, Purton (Telephone 601), and help us to get the finest ground accommodation in the West of England, where you will see the best football from the best team.

Thank you for your support and interest this season; may you enjoy your summer holidays, and we look forward to seeing you at next season's kick-off.

Meet the



**"ROGUES", "CADS" and "JUNIORS"**

**Shoes too comfortable to take off**



at the

**Swindon Co-op Society Limited**

**Fleet Street**

**Swindon**

## **SEASON TICKETS - SEASON 1969-70**

Persons who hold tickets for Season 1968-69 are reminded that they must make application not later than **28th June, 1969** if they wish to retain their existing seat. Application forms are available to EXISTING SEASON TICKET HOLDERS from their Steward tonight. Please ensure that you have yours.

For those persons desiring to become new Season Ticket Holders next season there are a limited number of seats available which will be on sale from 10 a.m. on **Wednesday, 7th May, 1969**. Application forms for these seats will be obtainable from the Main Booking Office (overlooking the car park) after tomorrow night's match.

It should be clearly understood that holders of existing 'B' Issue Tickets and all New Applicants will only be able to avail themselves of 'B' Issue Tickets for Season 1969-70.

n.b. 'B' Issue means that holders are entitled to their seat at League matches only, they are not guaranteed tickets to Cup Ties.

## APPEARANCES and GOALSCORERS 1968-69

Players	League		League Cup		F.A. Cup		Combn.		Combn. Cup	
	App.	Goals	App.	Goals	App.	Goals	App.	Goals	App.	Goals
Allen							18		5	
Bailey							20	1	5	
Blick	2		1				22		6	
Burrows	42	1	11		3				1	
Butler	39	1	12		2				2	
Claypole							3		1	
Dangerfield	1						25	3	4	
Dawson	28		9		3		1		2	
Desmeules							23	1	8	
Downsborough	44		12		3				1	
Fry							23	5	7	
Handrick							20			
Harland	44	1	12	1	3				1	
Heath	37	2	12		2				1	
Hubbard							24		7	
Jones C.	20	6	4	1	1	1	7	2	4	2
Jones R.							23		8	
Lowe							1		8	1
Mascia							25	2	8	1
Morgan							11		3	
Noble	44	16	12	4	2				1	3
Penman	18	1	8	1			2		6	2
Rogers	43	21	12	7	3	1			1	3
Smart	41	9	12	6	3				1	1
Smith	37	6	12	4	3	1	1		1	
Smith J.							15	1		
Thomas	43		12		3				1	
Trollope	19	1	2				4	1	1	
Wetson							4		1	
Own Goals		3		1				1		

### G. H. FLOWER & SON LIMITED

WOOD LANE, CHIPPENHAM

LICENCE No. S.2802

PHONE 2017

### SCRAP METAL

and

### GENERAL WASTE SALVAGE DEALERS

Plant dismantling carried out

Members of

National Association of Non-Ferrous Metal Merchants

### G. A. STREETLY

Tobacconist and Confectioner

10 BOURNE ROAD - MOREDON - SWINDON

Telephone 4956

"COAL!"  
"COAL!"  
"COAL!"

J. WILMER

St. Margaret's Road  
Swindon

Telephone 22535

### LEESE, ING & CO. LTD.

Mineral Water and Squash Manufacturers

LANSDOWN ROAD - SWINDON

TELEPHONE 22744

Train for the soccer season—  
shoot from **Swindon** every day to

**LONDON** (over 15 trains)

**BRISTOL** (9 trains)

**CARDIFF** (9 trains)

*All the services are in the free pocket timetables*

Going out for the day?  
Ask for the Western Bargains folder

Get these travel aids at  
stations or travel agents



**Inter-City**

DO not let **CHILBLAINS** spoil a good game



**RELAPERN**

Price 2/6 from your CHEMIST

2/10 Post Paid from

**BALLARD & CO. (CHEMISTS) LTD.**  
**FARINGDON - BERKSHIRE**

## FORTHCOMING MATCHES

TUESDAY, 6th MAY, 1969

PETER HILTON TESTIMONIAL MATCH

**SWINDON TOWN**

v.

**CRYSTAL PALACE**

Kick-off 7.30 p.m.

SATURDAY, 10th MAY, 1969

ENGLISH SCHOOLBOYS SHIELD Second Leg

**SWINDON SCHOOLBOYS**

v.

**LIVERPOOL  
SCHOOLBOYS**

Kick-off 3 p.m.



## DON ROGERS SPORTS

**29 FARINGDON ROAD, SWINDON**

Stockists of all leading sports equipment

Discount to all clubs

Suppliers to Swindon Town Football Club

Telephone 27378

### *Maylott Studios*

**For Group & Sport Photographs**

Official Photographer to  
Swindon Town Football Club

**31 FARINGDON ROAD**

Telephone 22792

### *Notton's Cafe*

**COUNTY ROAD**  
200 yards from Ground

Perfect meals at all times

### L. Wollen

OFF LICENCE

**WINES and SPIRITS**

Arkell's Ales and Stout

**373 Cricklade Road, Swindon**

Delivers Daily Phone 3508

### C. DUNN & SON

**Builders and Decorators**

Alterations, Renovations  
Conversions, Plumbers and  
Sanitary Engineers

**503 Cricklade Rd. Tel: 22522**

## THE PORK SHOP

(Swindon Bacon Curing Co. Ltd.)

Specialists in

**EACON - PORK - COOKED HAM**

**50 FLEET STREET - SWINDON**

**TELEPHONE 22122**

## LAST WEEKS MATCHES

### DIVISION III

Saturday, 19th April, 1969.

Beat WALSALL (Away) 2—0.

Team: Downsborough; Dawson, Thomas; Butler, Burrows, Harland;  
Penman, Smart, Smith, Noble, Rogers.

Scorer: Rogers (2).

Attendance: 10,654.

Referee: Mr. V. James (York).

Tuesday, 22nd April, 1969.

Beat MANSFIELD TOWN (Home) 1—0.

Team: Downsborough; Dawson, Thomas; Butler, Burrows, Harland;  
Penman, Smart, Smith, Noble, Rogers.

Scorer: Own goal.

Attendance: 21,045.

### FOOTBALL COMBINATION

Saturday, 19th April, 1969.

Beat NORTHAMPTON TOWN (Home) 1—0.

Team: Jones; Desmeules, Trollope; Handrick, Blick, Hubbard; Mascia,  
Bailey, Smith, Dangerfield, Fry.

Scorer: Fry.

Referee: Mr. N. G. Root (Abingdon).

## LEAGUE CUP FINAL

**OFFICIAL COMMEMORATIVE POSTCARDS**

with particulars of each round and with  
Special Wembley Handstamp

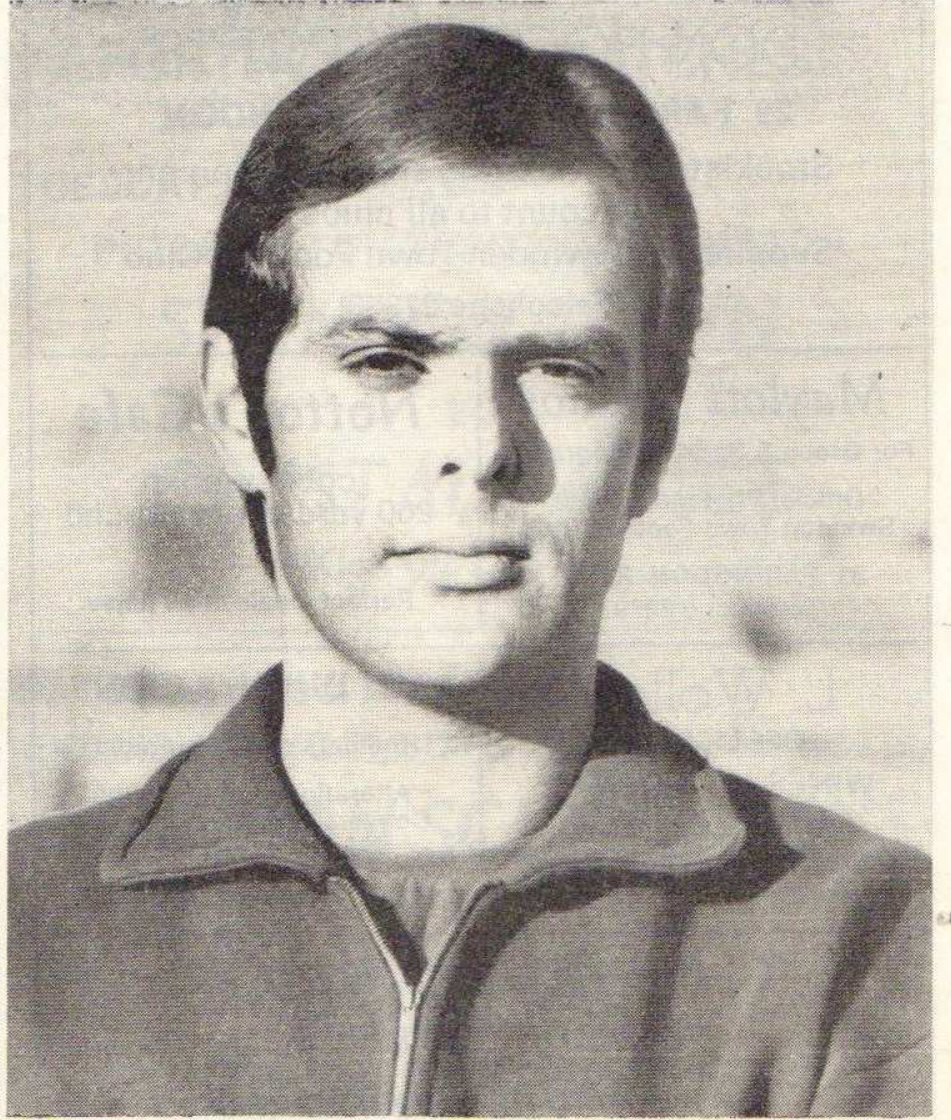
**Price 2/6 each**

plus S.A.E. (size 7½" x 5" or over) orders now to:—

**Dept. A, Swindon Town Football Co. Ltd., County Ground,  
Swindon**



John Trollope.



Owen Dawson.

Photograph by R. Marsh.

## Cecil Green

Artistic Decorations in all its branches

12 Armstrong Street, Swindon, Wilts. Tel. 4593

## W. COLLINS (Swindon) LTD.

TURF ACCOUNTANTS

69 COMMERCIAL ROAD - SWINDON

TEL. 21371

AND AT THE GREEN, LYNEHAM



## CLARK BROS. (Swindon) Ltd.

Building and Civil Engineering Contractors

CONSULT US FOR

BUILDING AND CIVIL ENGINEERING  
CONSTRUCTION IN ALL ITS PHASES

STRATTON ROAD  
SWINDON

Telephone  
Swindon 27261



throughout the West

you will find Bradley Estates beautifully situated to meet the requirements of modern living. If you are thinking about a new home and would like to receive full details of our current and planned estates write now to 74 Victoria Road Swindon Wiltshire. Please send me details of

- Green Meadow Estate, Swindon, Wiltshire
- Nythe Estate, Swindon, Wiltshire
- Monkton Park Estate, Chippenham, Wiltshire
- Park Hill Estate, Frome, Somerset
- Damory Down Estate, Blandford Forum, Dorset
- Harkwood Farm Estate, Poole, Dorset
- Roman Way Estate, Bourton-on-the-Water, Gloucestershire

Name .....

Address .....



**BRADLEYESTATES**



MY MASTER SAYS THAT  
MAN'S SECOND BEST FRIEND  
IS A SAVINGS BANK ACCOUNT

INTEREST 6% IN THE  
SPECIAL INVESTMENT DEPT.

Local Offices  
17 Commercial Road, Swindon  
6 Maryport Street, Devizes.

T RUSTEE  
S AVINGS  
B ANK

8,000 SEATS FOR SHEFFIELD WEDNESDAY F.C.

6,000 SEATS FOR SHEFFIELD UNITED F.C.

7,000 SEATS FOR ASTON VILLA F.C.

3,000 SEATS FOR OLDHAM F.C.

3,500 SEATS FOR LEEDS UNITED F.C.

4,000 SEATS FOR PETERBOROUGH AGRICULTURAL SOCIETY

13,500 SEATS FOR HULL CITY F.C.

3,200 SEATS FOR COVENTRY CITY F.C.

FAST, EFFICIENT SERVICE FROM MARTYN LYNSHAW LTD.

THE LATEST THING IN STADIUM SEATING

- MANUFACTURED IN HIGH-DENSITY POLYTHENE
- NO MAINTENANCE
- ANY COLOUR
- SEND FOR DETAILS
- LIGHT CONSTRUCTIONAL STEELWORK
- ANCILLARY WORK FOR THE BUILDING TRADE



FAST EFFICIENT SERVICE BY  
**MARTYN LYNSHAW LIMITED**

Telephone  
21844

BOUNDARY WORKS - STRATTON ROAD - SWINDON